



SIGNATURE
ESTATES

21 Trevellance Way

Watford, WD25 0LY

Asking Price £320,000

Nestled in the desirable area of Trevellance Way, Watford, this charming maisonette offers a perfect blend of comfort and convenience. With two spacious double bedrooms, this property is ideal for couples, small families, or those seeking a peaceful retreat. The modern living area seamlessly connects to a dining space, creating an inviting atmosphere for both relaxation and entertaining.

The maisonette boasts a well-appointed bathroom and a private garden, providing a delightful outdoor space for gardening enthusiasts or those who simply wish to enjoy a breath of fresh air. Additionally, parking is available, ensuring that you have a secure place for your vehicle.

One of the standout features of this property is its excellent transport links, making commuting to London and surrounding areas a breeze. Whether you are heading to work or exploring the vibrant local community, you will find that convenience is at your doorstep.

Constructed between 1970 and 1979, this home combines modern living with a touch of character. It is a wonderful opportunity for anyone looking to settle in a friendly neighbourhood with all the amenities you could need nearby. Do not miss the chance to make this delightful maisonette your new home.

- Two Bedroom Maisonette
- Modern Kitchen & Bathroom
- First Floor Accommodation
- Great Area To Live
- Sunny Garden
- Backs onto Woodside Playing Fields
- Close To Local Schools
- Easy Motorway Access
- No Upper Chain!

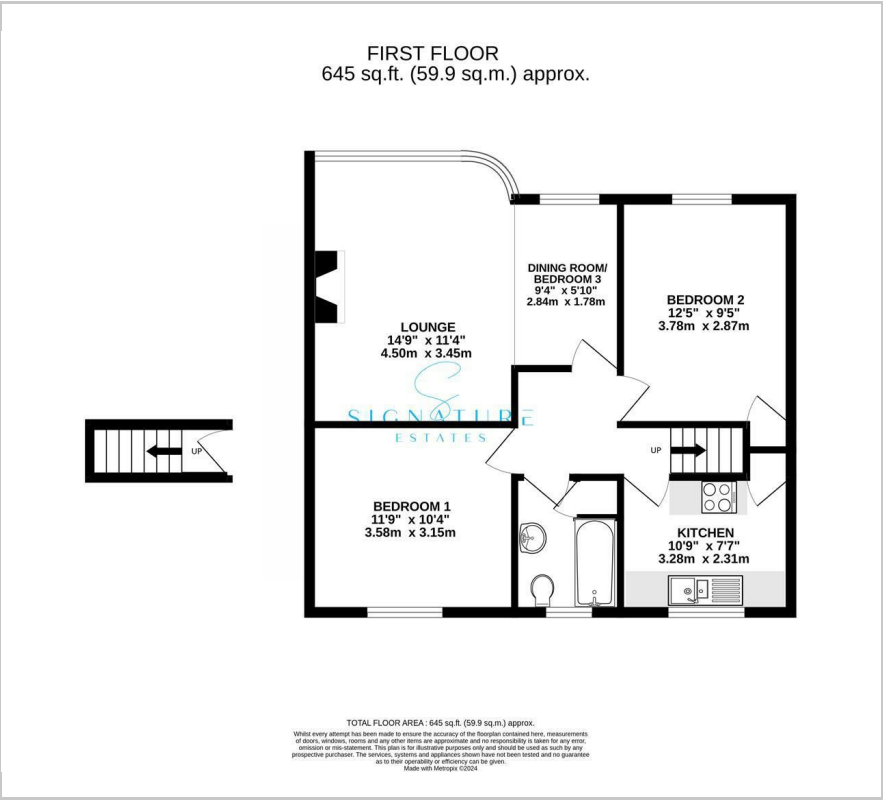
Viewing

Please contact our Abbots Langley Office on 01923262666 if you wish to arrange a viewing appointment for this property or require further information.

SIGNATURE
ESTATES



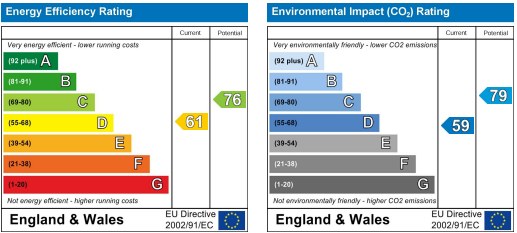
Floor Plan



Area Map



Energy Efficiency Graph



These particulars, whilst believed to be accurate are set out as a general outline only for guidance and do not constitute any part of an offer or contract. Intending purchasers should not rely on them as statements of representation of fact, but must satisfy themselves by inspection or otherwise as to their accuracy. No person in this firms employment has the authority to make or give any representation or warranty in respect of the property.